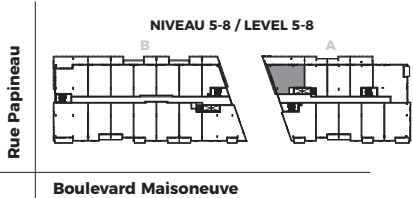
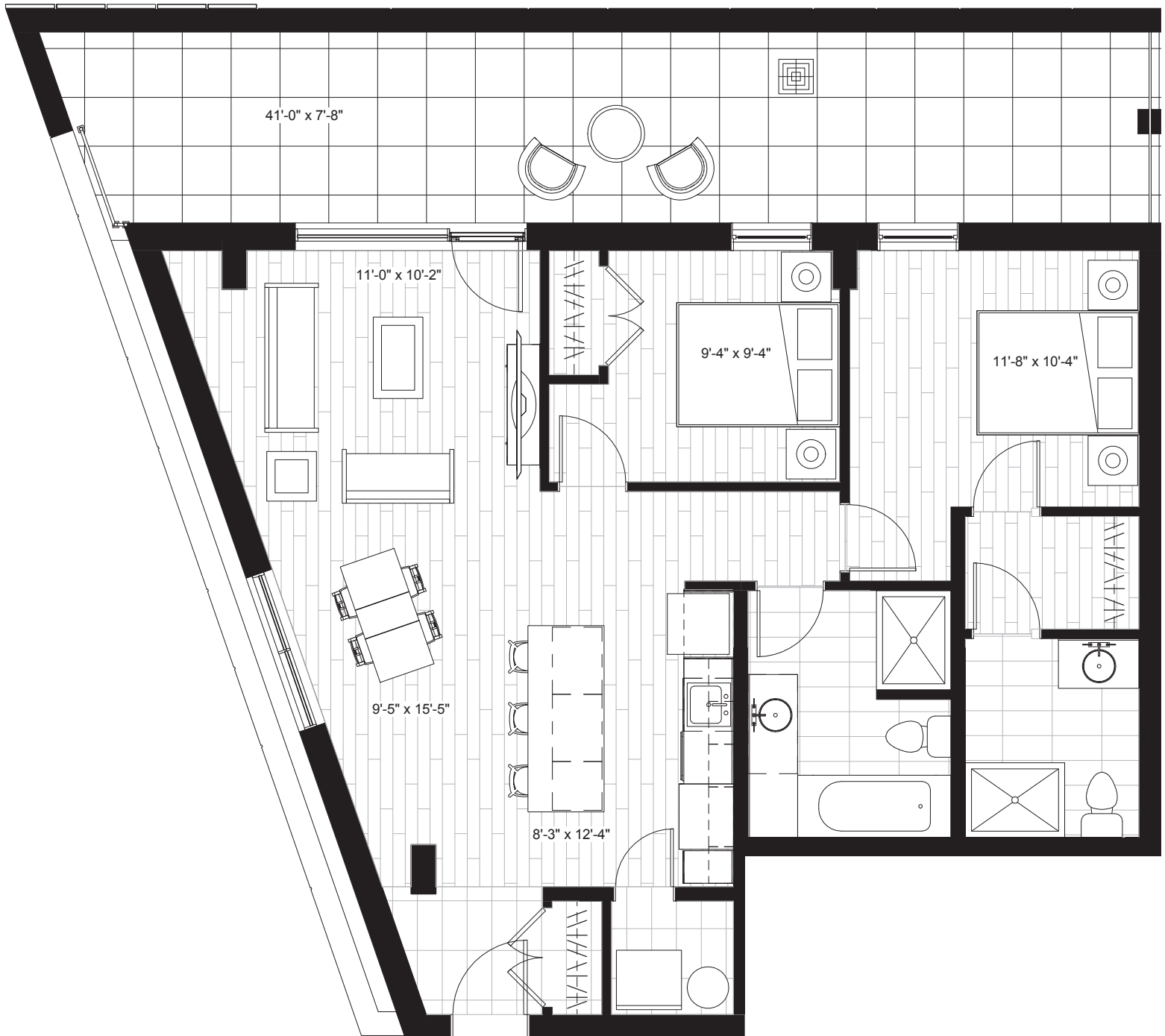


# D2

## 2 CHAMBRES 2 BEDROOMS

502 | 602 | 702 | 802  
948 pc/sf



LEVIBE.CA

78-88 Dollard-des-Ormeaux  
Gatineau, QC, J8X 3M3

Les plans et caractéristiques sont susceptibles aux changements sans préavis. La superficie réelle de l'espace plancher peut varier de la superficie indiquée.  
Actual usable space may vary from stated area. Dimensions, specifications and architectural detailing are subject to changes without notice. E.&O.E